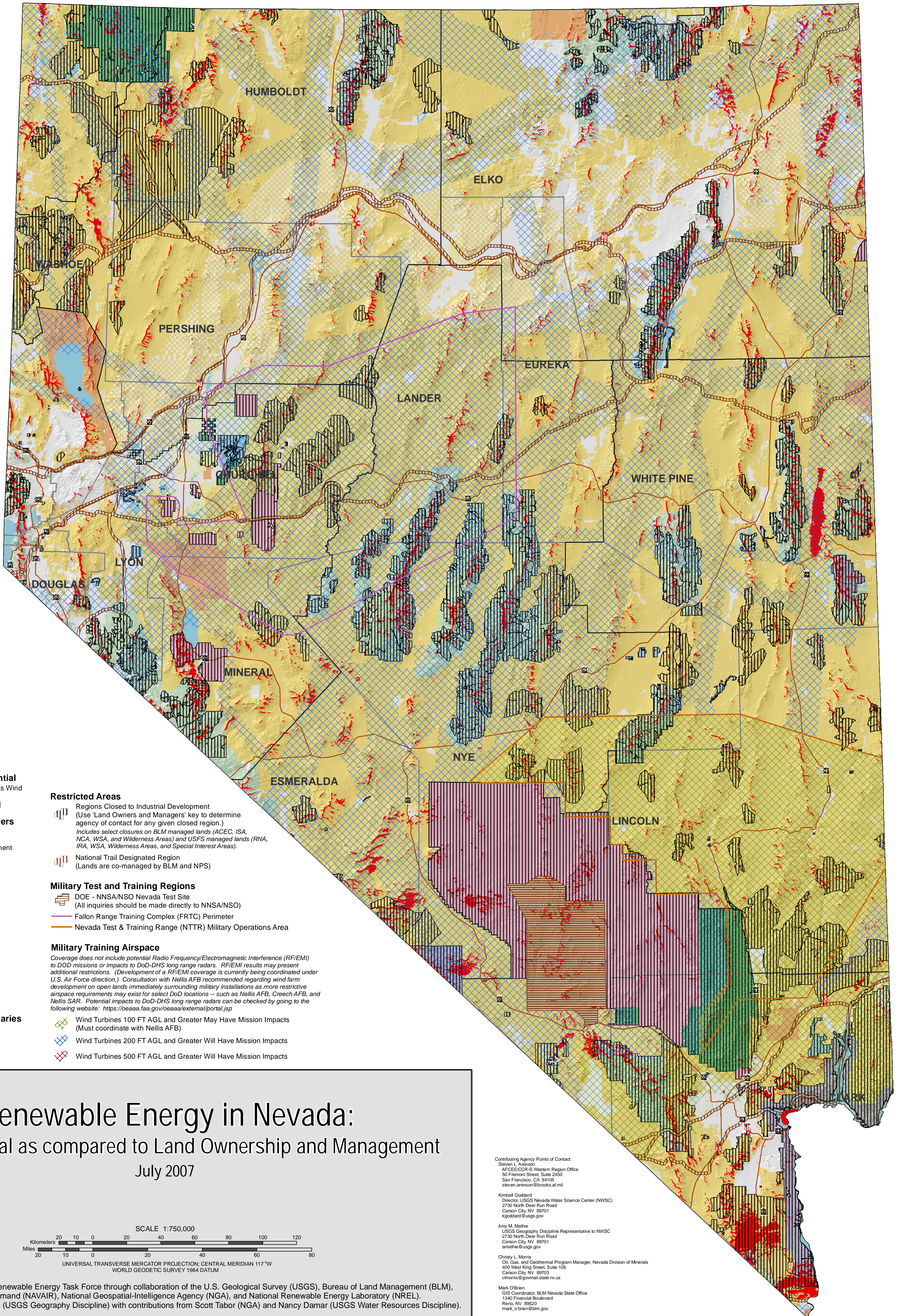


NOTE: For land ownership and management reference only. This map is not suited for navigation nor targeting.



**Wind Development Potential**  
Consolidated Power Class Wind Resource Model [3 (FAIR) to 7 (SUPERB)]

**Land Owners and Managers**

- Bureau of Indian Affairs
- Bureau of Land Management
- Bureau of Reclamation
- Department of Defense
- Department of Energy
- Fish and Wildlife Service
- Forest Service
- National Park Service
- Nevada State
- Private
- Regional Park
- Water

**Federal and State Boundaries**

- BLM District Boundary
- County Boundary

**Restricted Areas**

- Regions Closed to Industrial Development (Use 'Land Owners and Managers' key to determine agency of contact for any given closed region.) Includes select closures on BLM managed lands (ACEC, ISA, NCA, WSA, and Wilderness Areas) and USFS managed lands (RNA, IRA, WSA, Wilderness Areas, and Special Interest Areas).
- National Trail Designated Region (Lands are co-managed by BLM and NPS)

**Military Test and Training Regions**

- DOE - NNSA/NSO Nevada Test Site (All inquiries should be made directly to NNSA/NSO)
- Fallon Range Training Complex (FRTC) Perimeter
- Nevada Test & Training Range (NTR) Military Operations Area

**Military Training Airspace**

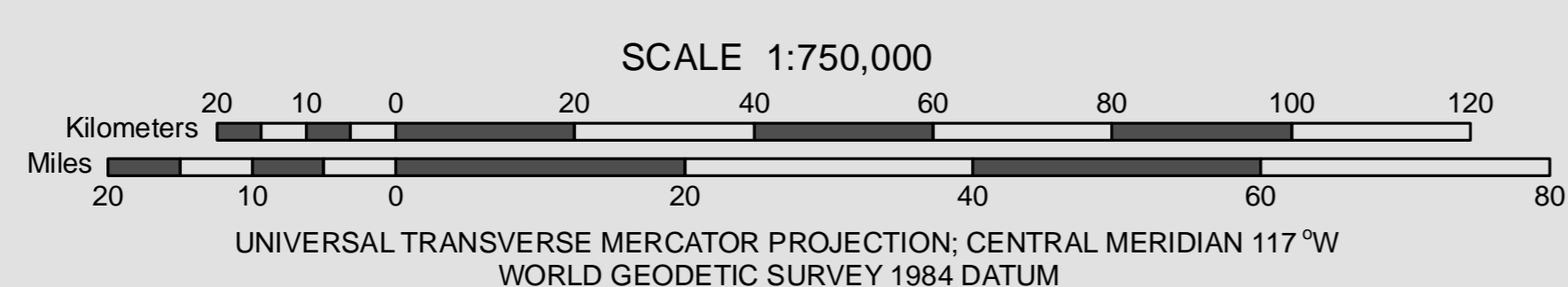
Coverage does not include potential Radio Frequency/Electromagnetic Interference (RF/EMI) to DoD missions or impacts to DoD-DHS long range radars. RF/EMI results may present additional restrictions. (Development of a RF/EMI coverage is currently being coordinated under U.S. Air Force direction.) Consultation with Nellis AFB recommended regarding wind farm development on open lands immediately surrounding military installations as more restrictive airspace requirements may exist for select DoD locations - such as Nellis AFB, Creech AFB, and Nellis SAR. Potential impacts to DoD-DHS long range radars can be checked by going to the following website: <https://oeaaa.faa.gov/oeaaa/external/portal.jsp>

- Wind Turbines 100 FT AGL and Greater May Have Mission Impacts (Must coordinate with Nellis AFB)
- Wind Turbines 200 FT AGL and Greater Will Have Mission Impacts
- Wind Turbines 500 FT AGL and Greater Will Have Mission Impacts

# Renewable Energy in Nevada:

## Wind Potential as compared to Land Ownership and Management

July 2007



Data compiled for the Federal Renewable Energy Task Force through collaboration of the U.S. Geological Survey (USGS), Bureau of Land Management (BLM), Naval Air Systems Command (NAVAIR), National Geospatial-Intelligence Agency (NGA), and National Renewable Energy Laboratory (NREL). Map preparation by Amy M. Mathie (USGS Geography Discipline) with contributions from Scott Tabor (NGA) and Nancy Damar (USGS Water Resources Discipline).

Contributing Agency Points of Contact:  
Steven L. Aronson  
AFCEE/CCR-SI Western Region Office  
50 Fremont Street, Suite 2450  
San Francisco, CA 94105  
steven.aronson@brooks.af.mil

Kimball Goddard  
Director, USGS Nevada Water Science Center (NWSC)  
2730 North Deer Run Road  
Carson City, NV 89701  
kgoddard@usgs.gov

Amy M. Mathie  
USGS Geography Discipline Representative to NWSC  
2730 North Deer Run Road  
Carson City, NV 89701  
amathie@usgs.gov

Christy L. Morris  
Oil, Gas, and Geothermal Program Manager, Nevada Division of Minerals  
400 West King Street, Suite 106  
Carson City, NV 89703  
clmorris@govmail.state.nv.us

Mark O'Brien  
GIS Coordinator, BLM Nevada State Office  
1340 Financial Boulevard  
Reno, NV 89502  
mark\_o'brien@blm.gov